

☐ Memorial Tree at \$1,000. Maximum 4 lines of 16 characters and spaces.

-----  
-----  
-----

☐ Memorial Bench at \$2,500. Maximum 4 lines of 16 characters and spaces.

-----  
-----  
-----

**Reserve online at**

**[www.lhscky.org/support](http://www.lhscky.org/support)**

When reserving online, please use the comments section to indicate which piece you would like to reserve and the characters you would like engraved.

Name: \_\_\_\_\_

Address: \_\_\_\_\_  
\_\_\_\_\_

Phone: \_\_\_\_\_

Email: \_\_\_\_\_

**Payment:**

☐ Check Enclosed

(Payable to Lexington Hearing & Speech Center)

Credit Card: ☐ Visa ☐ MasterCard ☐ Amex

Card Number: \_\_\_\_\_

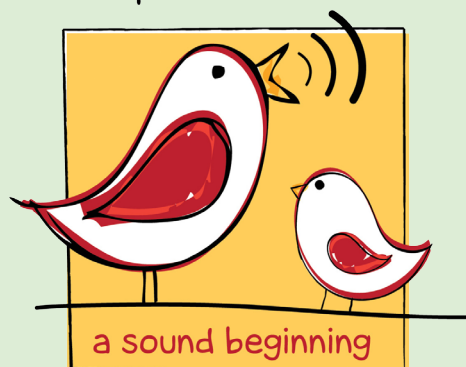
Exp. Date: \_\_\_\_\_ CVC/CVV Code: \_\_\_\_\_

☐ Request to send an invoice

Authorized Signature: \_\_\_\_\_  
\_\_\_\_\_

Print Name: \_\_\_\_\_

Lexington Hearing  
& Speech Center



**350 Henry Clay Blvd.  
Lexington, KY 40502**

**Phone: 859-268-4545  
[www.lhscky.org](http://www.lhscky.org)**

Lexington Hearing & Speech Center

# The Sound Beginning Garden

Lexington Hearing & Speech Center is embarking upon a special project that will showcase the wonderful LHSC family! In 2020, LHSC will begin building the 'Sound Beginning Garden'. The project features the sound wave of 'a sound beginning' and will be a welcoming space for children as they enter and exit the Early Learning Center every day. This project symbolizes their early childhood education journey as they prepare themselves for future learning.



By supporting this project, you will not only be able to concrete your or a loved ones legacy at LHSC forever, you will also help Lexington Hearing & Speech Center in its mission to teach children with hearing, speech, and language impairments to listen and talk.

### Ways you can leave your legacy:

#### 4 x 8 Brick - \$100



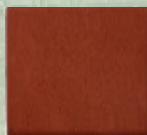
Includes 2 lines with 16 characters and spaces

#### 4 x 8 Colored Brick - \$150



Color Options: Orange, Red, or Yellow  
Includes 2 lines with 16 characters and spaces

#### 8 x 8 Brick - \$250



Includes 4 Lines with 16 characters and spaces

#### 8 x 16 Paver - \$500



Includes 4 lines with 30 characters and spaces

#### Memorial Tree - \$1,000



With engraved plaque

#### Concrete Bench - \$2,500



With engraved plaque



Please reserve the following piece(s) of The Sound Beginning Garden at Lexington Hearing & Speech Center. I have enclosed \$\_\_\_\_\_ for:

*If reserving more than one piece, please use another brochure to fill out characters.*

\_\_\_\_\_  
QTY 4x8 Brick at \$100. Maximum 2 lines of 16 characters and spaces.

\_\_\_\_\_  
QTY 4x8 Colored Brick at \$150. Maximum 2 lines of 16 characters and spaces.

☐ Yellow ☐ Red ☐ Orange

\_\_\_\_\_  
QTY 8x8 Brick at \$250. Maximum 4 lines of 16 characters and spaces.

\_\_\_\_\_  
QTY 8x16 paver at \$500. Maximum 4 lines of 30 characters and spaces.

Line 1: \_\_\_\_\_

Line 2: \_\_\_\_\_

Line 3: \_\_\_\_\_

Line 4: \_\_\_\_\_

*More options and payment information on the back*